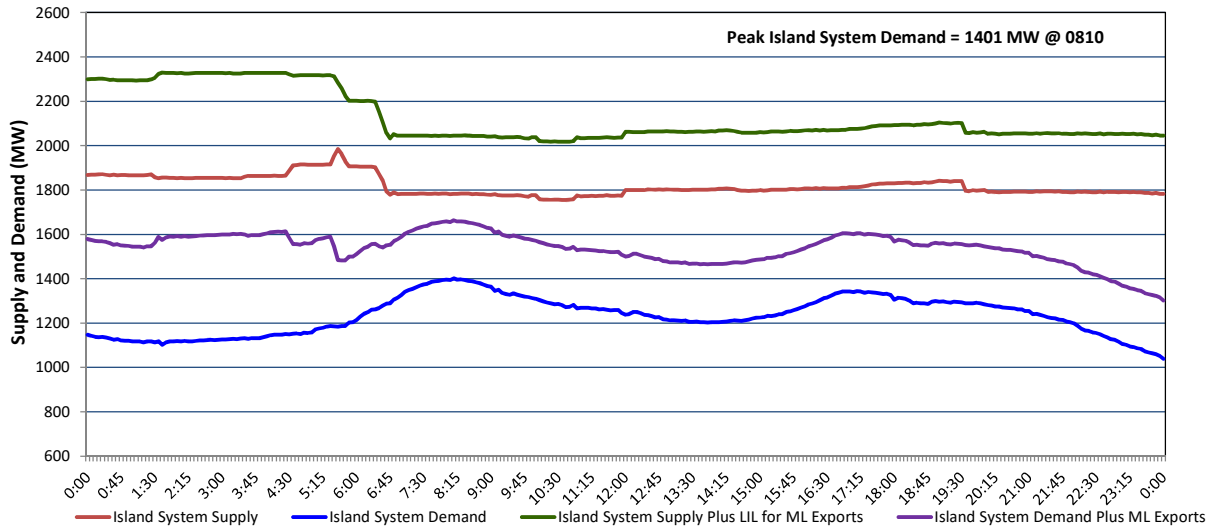


# Newfoundland Labrador Hydro (NLH) Supply and Demand Status Report Filed Friday, December 06, 2024

## Section 1 Island Interconnected System - Supply, Demand & Exports Actual 24 Hour System Performance For Thursday, December 05, 2024



### Island Supply Notes For December 05, 2024 <sup>1</sup>

- A As of 0000 hours, October 20, 2024, Holyrood Unit 1 unavailable due to forced extension to planned outage (170 MW).
- B At 0644 hours, December 05, 2024, Labrador Island Link available at 450MW due to planned derating (700 MW) - Monopole.
- C At 1200 hours, December 05, 2024, Stephenville Gas Turbine available (50 MW).
- D At 1908 hours, December 05, 2024, Granite Canal Unit unavailable due to forced outage (40 MW).
- E At 2000 hours, December 05, 2024, Paradise River Unit unavailable due to forced outage (8 MW).

## Section 2 Island Interconnected System - Supply, Demand & Outlook

Fri, Dec 06, 2024	Island System Outlook <sup>2</sup>	Seven-Day Forecast	Island System Daily Peak Demand (MW)	
			Forecast <sup>8</sup>	Adjusted <sup>6</sup>
Island System Supply: <sup>4</sup>	1,722 MW	Friday, December 6, 2024	1,310	1,230
NLH Island Generation: <sup>3,7</sup>	1,400 MW	Saturday, December 7, 2024	1,280	1,200
NLH Island Power Purchases: <sup>5</sup>	120 MW	Sunday, December 8, 2024	1,390	1,310
NP and CBPP Owned Generation:	200 MW	Monday, December 9, 2024	1,305	1,225
LIL/ML Net Imports to Island: <sup>9</sup>	2 MW	Tuesday, December 10, 2024	1,335	1,255
		Wednesday, December 11, 2024	1,310	1,230
7-Day Island Peak Demand Forecast:	1,390 MW	Thursday, December 12, 2024	1,140	1,060

### Island Supply Notes For December 06, 2024

- F At 0133 hours, December 06, 2024, Hinds Lake Unit unavailable due to forced outage (75 MW).
- Notes:
1. Generation outages for running and corrective maintenance are included. These are not unusual for power system operations. They generally do not impact customer supply. Hydro schedules outages to system equipment whenever possible to coincide with periods when customer demands are low and sufficient supply reserves are available. However, from time to time equipment outages are necessary and reserves may be impacted.
  2. As of 0800 Hours.
  3. Gross continuous unit output.
  4. Gross output from all Island sources (including Note 4).
  5. NLH Island Power Purchases include: ML Imports, Exploits Generation, Rattle Brook, Star Lake, Wind Generation and capacity assistance (when applicable).
  6. Adjusted for interruptible load and the impact of voltage reduction when applicable.
  7. Due to limitations inherent in the design of combustion turbines, the output of combustion turbines may be reduced in the event that ambient temperatures exceed the threshold required for full rated output. This threshold is dependent on the design of each turbine.
  8. Does not include ML Exports.
  9. LIL Import sunk in the Island System. Actual LIL flows will be restricted by various system conditions including, but not limited to, Island Load, ML Exports and Avalon Unit status.

## Section 3 Island Peak Demand and Exports Information Previous Day Actual Peak and Current Day Forecast Peak

Thu, Dec 05, 2024	Island Peak Demand <sup>10</sup>	8:10	1,401 MW
	Exports at Peak		262 MW
	LIL Net Imports to Island		888 MWh
Fri, Dec 06, 2024	Forecast Island Peak Demand		1,310 MW

- Notes: 10. Island Demand is supplied by NLH generation and purchases, LIL Imports plus generation owned and operated by Newfoundland Power and Corner Brook Pulp & Paper (Deer Lake Power, DLP).